

Swage Sockets Closed

Product information



General: Swage sockets are recommended for use on 6x19 or 6x36IWRC regular lay steel wire ropes. Also on galvanized bridge ropes satisfactory results are achieved.

Before using these swage sockets with other steel wire rope construction or lay, it is recommended that the termination be proofloaded to prove the adequacy of the assembly. These sockets have a regular efficiency rating of 90% based on the catalog strength of the used wire rope. When properly applied they even can have an efficiency rating of 100%.

... [Read more](#)

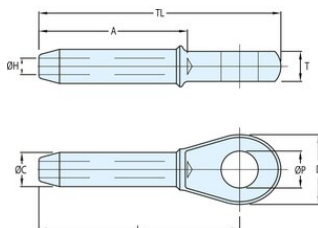
Material: Steel

Finish: Forged Carbon Steel

Warning: Not recommended for use on fiber core ropes.

Swage Sockets Closed

Blueprint



Technical data

Part code	Rope Ø range mm	Ø C mm	Ø H mm	D mm	Ø Pmm mm	T mm	A mm	TLmm mm	L mm	Weight kg
10.46SSC06	6	12,7	6,85	37	19,1	13	54	111	89	0.15
10.46SSC08	8	19,6	8,65	43	22,4	17	81	140	114	0.36
10.46SSC10	10	19,6	10,4	43	22,4	17	81	140	114	0.35
10.46SSC11	11	24,9	12,2	51	26,9	22	108	176	146	0.7
10.46SSC13	13	24,9	14	51	26,9	22	108	176	146	0.7
10.46SSC14	14	31,8	15,5	63	31,8	29	135	222	184	1.3
10.46SSC16	16	31,8	17	63	31,8	29	135	222	184	1.3
10.46SSC19	19	39,4	20,3	76	36,6	33	162	264	219	2.3
10.46SSC22	22	43,2	23,9	89	42,9	38	189	308	257	3.4
10.46SSC25	25	50,5	26,9	102	52,5	44	216	349	292	5.1
10.46SSC29	29	57	30,2	114	58,5	51	243	387	324	7.2
10.46SSC32	32	64,5	33,8	127	65	57	270	438	365	10.5
10.46SSC35	35	71	36,8	133	65	57	297	479	400	14.1
10.46SSC38	38	78	40,1	140	71,5	63	324	518	432	17.7
10.46SSC44	44	86	47,2	171	90,5	76	378	610	508	23.6
10.46SSC51	51	100	53,5	197	96,5	83	432	698	584	40.8
10.46SSC57	57	113	59,9	219	109,5	102	486	756	632	55.4
10.46SSC63	63	125,2	67,5	219	109,5	102	498	791	667	64.4
10.46SSC76	76	150,6	80,4	235	134,9	137	603	959	816	114.3