

Rope Pear Socket Nemag

Product information



The Nemag Rope Pear Socket is designed to, in combination with the Nemag Quick Release Link, smoothly pass over cable sheaves. The life span of the Nemag Rope Pear Socket generally surpasses that of the steel wire rope. The Rope Pear socket can be fitted by casting with a 2-component casting mass without the need for outside assistance, and ensures a strong connection. Nemag Rope Pear Sockets are suited to any type of steel wire rope.

... [Read more](#)

Material: High grade casted steel.

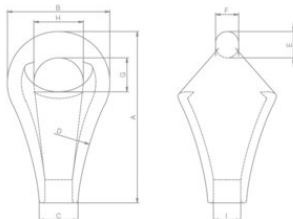
Marking: Manufacturers logo, size and batch number.

Warning: The specified capacities shown are for grab operation. For other applications use safety factor 5:1

Safety factor: 5:1

Rope Pear Socket Nemag

Blueprint



Technical data

| Part code | Code | Rope Ø range mm | WLL ton | MBL | A mm | B mm | C mm | D mm | E mm | F mm | G mm | H mm | I mm | Weight kg |
|-------------|-------|-----------------|---------|------|------|------|------|------|------|------|------|------|------|-----------|
| 10.10NRPS01 | RP-1 | 10-11 | 1.5 | 10 | - | - | - | - | - | - | - | - | - | 0.4 |
| 10.10NRPS02 | RP-2 | 12-13 | 2 | 14 | 95 | 56 | 25 | 195 | 15.5 | 13.5 | 22 | 25 | 16 | 0.4 |
| 10.10NRPS03 | RP-3 | 14-15 | 2.5 | 17.5 | 109 | 64 | 28 | 220 | 17.5 | 15.5 | 24 | 29 | 19 | 0.6 |
| 10.10NRPS04 | RP-4 | 16-17 | 3 | 22.5 | 123 | 70 | 31 | 220 | 19.5 | 17.5 | 26 | 31 | 21 | 0.9 |
| 10.10NRPS05 | RP-5 | 18-19 | 4.5 | 27.5 | 135 | 84 | 33 | 245 | 21 | 19 | 30 | 42 | 23 | 1.3 |
| 10.10NRPS06 | RP-6 | 20-21 | 5 | 35 | 152 | 84 | 36 | 310 | 23 | 21 | 33 | 38 | 26 | 1.5 |
| 10.10NRPS07 | RP-7 | 22-24 | 7 | 42.5 | 166 | 100 | 40 | 310 | 26 | 23 | 37 | 48 | 30 | 2.2 |
| 10.10NRPS08 | RP-8 | 25-27 | 8 | 52.5 | 186 | 100 | 43 | 350 | 28 | 25 | 39 | 44 | 32 | 2.4 |
| 10.10NRPS09 | RP-9 | 28-30 | 11 | 70 | 202 | 120 | 45 | 350 | 32 | 28 | 40 | 58 | 35 | 3.7 |
| 10.10NRPS10 | RP-10 | 31-33 | 13 | 85 | 222 | 120 | 52 | 445 | 32 | 28.5 | 45 | 56 | 39 | 4.1 |
| 10.10NRPS11 | RP-11 | 34-36 | 15 | 95 | 239 | 142 | 55 | 445 | 36 | 31.5 | 50 | 70 | 42 | 5.9 |
| 10.10NRPS12 | RP-12 | 37-39 | 17 | 110 | 264 | 142 | 60 | 495 | 39 | 34.5 | 51 | 64 | 45 | 6.7 |
| 10.10NRPS13 | RP-13 | 40-42 | 21 | 125 | 285 | 166 | 63 | 555 | 43 | 36.5 | 59 | 80 | 48 | 9.3 |
| 10.10NRPS14 | RP-14 | 43-45 | 26 | 155 | 312 | 166 | 68 | 595 | 47 | 40 | 62 | 72 | 51 | 10.5 |
| 10.10NRPS15 | RP-15 | 46-48 | 30 | 180 | 337 | 170 | 75 | 595 | 51 | 44 | 66 | 68 | 55 | 12.1 |
| 10.10NRPS17 | RP-17 | 52-56 | 42.5 | 240 | 400 | 220 | 84 | 880 | 60 | 54 | 75 | 90 | 63 | 21.3 |

Rope Pear Socket Nemag

Combination of the Nemag Rope Pear Socket with Nemag Quick Release Link

A Rope Pear Socket can be fitted to a Quick Release Link of the same size, or to a link with a different size as indicated in table

| Pear code: | Link code: |
|------------|---------------------------|
| RP-2 | |
| RP-3 | RL-4 |
| RP-4 | RL-4 / RL-5 |
| RP-5 | RL-4 / RL-5 / RL-6 |
| RP-6 | RL-5 / RL-6 / RL-7 |
| RP-7 | RL-6 / RL-7 / RL-8 / RL-9 |
| RP-8 | RL-7 / RL-8 / RL-9 |
| RP-9 | RL-8 / RL-9 / RL-10 |
| RP-10 | RL-9 / RL-10 / RL-11 |
| RP-11 | RL-10 / RL-11 / RL-12 |
| RP-12 | RL-11 / RL-12 / RL-13 |
| RP-13 | RL-12 / RL-13 / RL-14 |
| RP-14 | RL-13 / RL-14 / RL-15 |
| RP-15 | RL-14 / RL-15 |
| RP-17 | RL-17 |