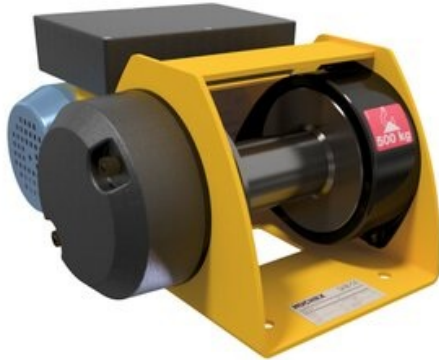


Electric winch MOTORBOX

Product information



Electric winch designed for simple lifting and pulling operations in different applications, ideal for replacing a manual winch. Capacities from 150 to 500 kg.

Available in two versions: - Direct control (CD) only for use protected from the weather. - Low voltage control (BT) ensuring user protection against electrical risks.

Applications:

- Maintenance
- Industry
- Manoeuvring hatches, doors etc.

Technical properties:

- FEM class: 1Dm - ISO M1 – Occasional use.
- Mechanically welded steel drum with wide flanges for safe and sound fastening of the rope.
- Greased reducer with helical gears.
- Automatic lack of current brake.
- Single phase 230 V motor brake with permanent capacitor - 50 Hz lifting type. Class F. Protection IP 54.
- Limit switches included.
- Direct control (CD models) only for use protected from the weather. Low voltage control (BT models) ensuring user protection against electrical risks.
- 3 buttons pendant control (Up - Down- Emergency Stop), not removable (3m long control cable).

Options:

- Wire rope and hook Tarpaulin cover

Marking: According to standard, CE-marked

Temperature range: -10°C to +50°C

Finish: Painted.

Standard: EN 13157, EN 14492-1

Safety factor: 5:1

WLL ton	Type	Rope Ø mm	Speed top layer m/min	Motor kW	Speed 1st layer m/min	Number of layers	Max. drum capacity m	A mm	B mm	C mm	D mm	E mm	F mm	G mm	øH mm	I mm	øJ mm	øK mm	L mm	M mm	Weight kg
0.15	CD	4	10.6	0.37	8.3	3	15	310	179	299	154	114	15	77	10.5	123	54	122	76	79	18.5
0.15	BT	4	10.6	0.37	8.3	3	15	358	207	329	154	114	15	77	10.5	123	54	122	76	79	20
0.3	CD	5	5.9	0.37	4.6	3	16	390	205	341	200	144	35	88	13	124	63.5	138	118.5	100	27
0.3	BT	5	5.9	0.37	4.6	3	16	438	212	341	200	144	35	88	13	124	63.5	138	118.5	100	29
0.5	CD	6	3.6	0.37	2.6	3	13.5	390	205	341	200	144	35	88	13	124	63.5	138	118.5	100	27
0.5	BT	6	3.6	0.37	2.6	3	13.5	438	212	341	200	144	35	88	13	124	63.5	138	118.5	100	29

Blueprint

