

## Snatch Block McKissick 404 Tail Board Light Champion

---

### Product information



#### General:

The McKissick snatch block 404 Light Champion from Crosby is a Tail board type snatch block. Available from WLL 2 up to 8 T. Can be delivered with bronze bushing (BB) and from WLL 8 T also with roller bearing (RB).

#### Features:

- Bolt for opening feature is retained, to ensure no lost bolts.
- Opening feature permits easy insertion of rope without reeving, or while the block is suspended.
- Center pin equipped with pressure lube fitting.
- All sizes feature sheave grooves suited for a range of wire line diameters.
- Meets or exceeds all requirements of ASME B30.26 including identification ductility, design factor, proof load and temperature requirements.
- Meet other critical performance requirements including fatigue life and material traceability, not addressed by ASME B30.26.

... [Read more](#)

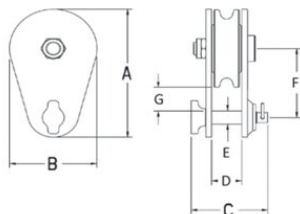
---

**Material:** Forged steel.

**Safety factor:** 4:1

## Snatch Block McKissick 404 Tail Board Light Champion

### Blueprint



### Technical data

Part code	Rope Ø range mm	WLL ton	Sheave dia mm	Bearing	A mm	B mm	C mm	D mm	E mm	F mm	G mm	Weight kg
16.15102015	8-10	2	76	BB	124	76	67	26	13	67	22	1.4
16.15102025	10-13	4	114	BB	197	108	79	40	19	108	41	3.2
16.15102098	16-19	8	152	BB	251	152	106	46	25	130	41	6.8
16.15102114	16-19	8	152	RB	251	152	106	46	25	130	41	6.8
16.15102169	16-19	8	203	BB	303	206	106	46	25	155	41	9.5
16.15102187	16-19	8	203	RB	303	206	106	46	25	155	41	9.5
16.15102230	16-19	8	254	BB	356	257	106	46	25	183	43	13.2
16.15102258	16-19	8	254	RB	356	257	106	46	25	183	43	13.2
16.15102301	16-19	8	305	BB	427	306	106	46	25	229	64	16.3
16.15102329	16-19	8	305	RB	427	308	106	46	25	229	64	16.3