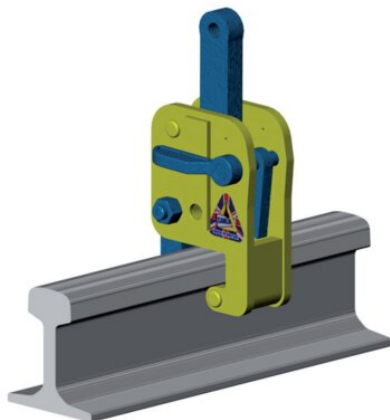


## CR railclamp

---

### Product information

**General:**

The CR rail clamps are designed to lift single rails securely and safely. The clamp is designed to fit most types of rail sectionsizes currently in use. The clamp has a narrow profile to enable attachment to an individual rail that is stacked side by side with other rails. The clamp is locked onto the rail-head via a leveroperated spring mechanism. It is recommended to use clamps suspended from a lifting beam for long rail lengths.

**Option:**

Clamps can be supplied with a short length of chain and liftingeye. This MUST be specified at the time of order.

... [Read more](#)

---

## CR railclamp

---

### Technical data

Code	WLL ton	Type	Number of rails	Weight kg
CR1000	1	CR1000	1	13
CR2000	2	CR2000	1	13