

Aluminium flat cable towing trolley MVK150

Product information

**General:**

AKAPP aluminium cable trolleys for track profile R150 are especially suitable for light duty operation, for both in- and outdoor conditions. The steel wheels are ball beared. The trolleys therefore will roll perfectly smooth through the track profile. The trolleys are equipped with a rubber strip to press against the cable(s).

Standard trolleys:

- End clamp AVK150
- Flat cable trolley KVK150
- Flat cable towing trolley MVK150

Cable weight: max. 20 kg.

Cable dimensions: max. 58x20 mm.

... [Read more](#)

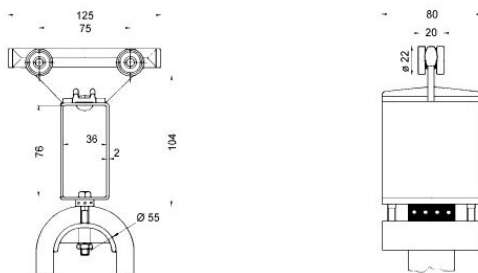
Material: steel mounting plate and cable carrier

Temperature range: -5° C t/m + 105° C

Finish: Galvanized

Aluminium flat cable towing trolley MVK150

Blueprint



Technical data

Code	Weight kg
MVK150	0.537