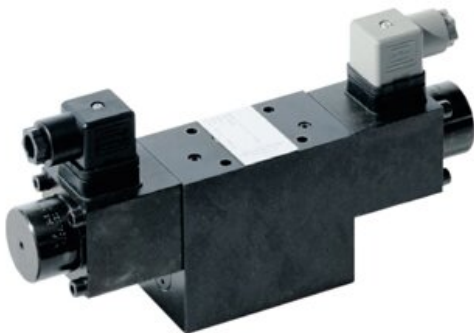


Control Valve M 326 | Vari Pumps | Double Acting



Product information

Control Valve M326 with electromagnetic control (24 VDC) and oil filter for Holmatro Vari hydraulic pump units (EC-versions only). Remote control sold separately.

Features:

- Only suitable in combination with EC-version Vari pumps. Contact our sales department for additional information
- Suitable for double-acting tools. Valve with electromagnetic control (24 VDC)
- With non-return valves for securing the load
- 3-position, 4-way valve
- Remote control, art no 100.151.060 (to be ordered separately). 4 buttons (on, off, lift and lower)

Code	Connection
M 326	3/8" NPT female (2x)
RC M 326 (remote control)	-