

## Control Valve M311 | Vari Pumps | single acting

---

### Product information



Control Valve M 311 for Holmatro hydraulic Vari pump units to regulate the oil flow in your hydraulic system.

- Suitable for single-acting tools
- Handle stops in each position
- 3-way, 3-position
- Not in combination with a vari pump model (name) starting with 18 W

To enable a safe & controlled way of working; make sure to complete your Holmatro PA hand pump or Vari pump unit with the right control valve to regulate the oil flow in your system.

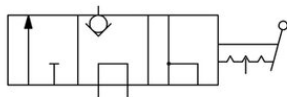
- For PA handpumps: the VM43L valve is optional to regulate your oil flow
- For vari pumps: an M311 (single acting), M322, M323 or M326 (double acting) valve is mandatory to regulate your oil flow
- The M304 (Sada switch for single & double use) can be added as an option for flexible use of your vari pump

... [Read more](#)

---

## Control Valve M311 | Vari Pumps | single acting

Blueprint



Technical data

Part code	Code	Connection
100.181.311	M 311	3/8" NPT female thread (2x)