

Inside Thread Terminal AISI 316

Product information

Stainless inside thread terminal with right handed metric thread for pressing or swaging onto stainless steel wire rope ends.

... [Read more](#)



Material: Stainless steel AISI 316.

Marking: logo, wire size and swage depth.

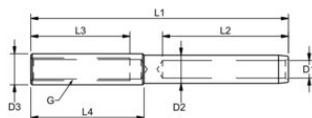
Temperature range: -50°C to +100°C and briefly up to +200°C

Finish: High polished.

Note: Left handed thread available on request.

Inside Thread Terminal AISI 316

Blueprint



Technical data

Part code	Rope diameter mm	MBL ton	Thread	D1 mm	D2mm mm	D3mm mm	G, mm	L1mm mm	L2mm mm	L3 mm mm	L4 mm mm	Weight kg/100pc
1207980305	3	0.8	M5	3.3	6.35	7.13	M5	77	38	20	27	1.3
1207980305L	3	0.8	M5	3.3	6.35	7.13	M5	92	38	35	42	1.6
1209870406	4	1.25	M6	4.4	7.5	8	M6	83.5	45	20	27	1.8
1207980406L	4	1.25	M6	4.4	7.5	8	M6	98.5	45	35	43	2.1
1207980506	5	1.25	M6	5.3	9	9	M6	90	51	20	30	2.8
1207980506L	5	1.25	M6	5.3	9	9	M6	105	51	35	45	3.2
1207980508	5	2.35	M8	5.3	9	12.58	M8	112	51	40	47	5.4
12070608	6	2.35	M8	6.5	12.58	12.58	M8	109.5	64	25	33.5	7.2
1207980608L	6	2.35	M8	6.5	12.58	12.58	M8	125.5	64	40	47	8.2
1207980610	6	3.5	M10	6.5	12.6	16	M10	126.5	64	40	50	10.5
1207980810	8	3.5	M10	8.4	16	16	M10	140	83	40	47	15.4
1207980812	8	5.1	M12	8.4	16	17.8	M12	147	83	40	48	16.7
1207981012	10	5.1	M12	10.5	17.8	17.8	M12	150	89	40	47	19.4
1207981016	10	8	M16	10.5	17.8	22	M16	152	89	40	45	20.7