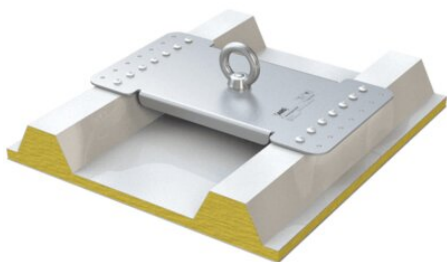


Anchor Point ABS - Lock X-Rivet

Product information



Anchorage point - designed for riveting onto sandwich and trapezoidal sheeting. Anchor point ABS-Lock X-Rivet is simply riveted on top of roof membrane using 14 watertight blind rivets.

The 2 different base plates can be used for different seam intervals.

- LX-SW-N-250 -> Distance between the holes: 180-250 mm
- LX-SW-N-333 -> Distance between the holes: 280-333 mm

Also available as an intermediate ("ZW") bracket in a lifeline system in 2 heights.

- LX-SW-N-...-ZW -> Bracket height 150 mm
- LX-SW-N-...-ZW-350 -> Bracket height 350 mm

For steel plating: ≥ 0.45 mm;

Aluminium: ≥ 0.8 mm.

Force directions: Lateral.

Substructure: Sandwich, trapezoidal sheeting, profile roof.

Attachment: Riveted

Application: Profile Roof, flat roofs

[... Read more](#)

Material: Stainless steel

Marking: According to standard

Standard: EN 795, CEN/TS/16415

Note: Installation materials included

Anchor Point ABS - Lock X-Rivet

Technical data

Part code	Code	Max. number of persons	Weight kg
19.10LX-SW-N-250	19.10LX-SW-N-250	3	2.012
19.10LX-SW-N-250-ZW	19.10LX-SW-N-250-ZW	3	2.34
19.10LX-SW-N-250-ZW-350	19.10LX-SW-N-250-ZW-350	3	2.712
19.10LX-SW-N-333	19.10LX-SW-N-333	3	2.129
19.10LX-SW-N-333-ZW	19.10LX-SW-N-333-ZW	3	2.457
19.10LX-SW-N-333-ZW-350	19.10LX-SW-N-333-ZW-350	3	2.829
19.10SY-1031-35	19.10SY-1031-35	-	0.17