

Eye Nuts DIN582 C15

Product information



Eye nuts, generally to DIN 582

Certification on request: 2.1, 2.2

... [Read more](#)

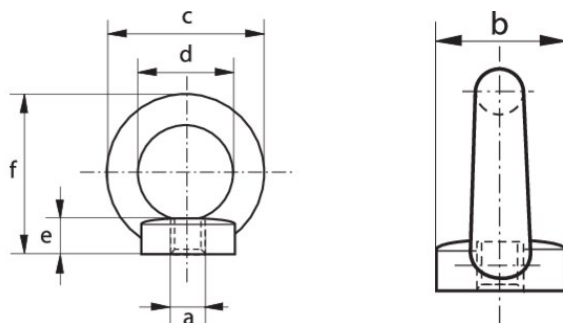
Material: carbon steel, C15

Finish: electro-galvanized

Safety factor: 6:1

Eye Nuts DIN582 C15

Blueprint



Technical data

Part code	WLL ton	Thread mm	a mm	b mm	c mm	d mm	e mm	f mm	Weight kg
-	0.07	M 6 x 1.00	M 6 x 1.00	20	36	20	8.5	36	4.2
11.40OHOMGD208	0.14	M 8 x 1.25	M 8 x 1.25	20	36	20	8.5	36	5.2
11.40OHOMGD210	0.23	M 10 x 1.50	M 10 x 1.50	25	45	25	10	45	9.4
11.40OHOMGD212	0.34	M 12 x 1.75	M 12 x 1.75	30	54	30	11	53	16
-	0.49	M 14 x 2.00	M 14 x 2.00	35	63	35	13	60	22
11.449199516	0.7	M 16 x 2.00	M 16 x 2.00	35	63	35	13	62	24
-	0.9	M 18 x 2.50	M 18 x 2.50	40	72	40	16	71	36
11.449199520	1.2	M 20 x 2.50	M 20 x 2.50	40	72	40	16	71	35.2
-	1.5	M 22 x 2.50	M 22 x 2.50	45	81	45	18	80	58.6
11.449199524	1.8	M 24 x 3.00	M 24 x 3.00	50	90	50	20	90	70.6
-	2.5	M 27 x 3.00	M 27 x 3.00	50	90	50	20	90	102
-	3.2	M 30 x 3.50	M 30 x 3.50	65	108	60	25	109	132
-	4.3	M 33 x 3.50	M 33 x 3.50	65	108	60	25	110	170
-	4.6	M 36 x 4.00	M 36 x 4.00	75	126	70	30	128	208
-	6.1	M 39 x 4.00	M 39 x 4.00	75	126	70	30	130	260
-	6.3	M 42 x 4.50	M 42 x 4.50	85	144	80	35	147	305
-	8	M 45 x 4.50	M 45 x 4.50	85	144	80	35	150	407
-	8.6	M 48 x 5.00	M 48 x 5.00	100	166	90	40	168	502
-	8.6	M 52 x 5.00	M 52 x 5.00	110	184	100	45	187	830
-	11.5	M 56 x 5.50	M 56 x 5.50	110	184	100	45	187	669
-	16	M 64 x 6.00	M 64 x 6.00	120	206	110	50	208	930
-	21	M 72 x 6.00	M 72 x 6.00	150	260	140	60	260	1,500

Eye Nuts DIN582 C15
