

Eye Bolts DIN580 C15

Product information



Eye bolts, generally to DIN 580.

Certification on request: 2.1, 2.2

... [Read more](#)

Material: carbon steel, C15

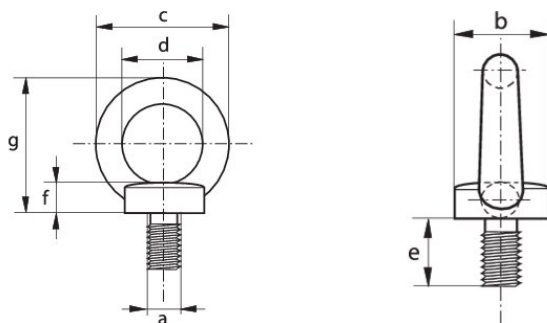
Marking: CE-marked

Finish: electro-galvanized

Safety factor: 6:1

Eye Bolts DIN580 C15

Blueprint



Eye Bolts DIN580 C15

Technical data

| Part code | WLL ton | Thread mm | a mm | b mm mm | c mm | dmm mm | e mm mm | f mm mm | g mm mm | Weight kg/100pc |
|--------------|---------|-----------|-----------|---------|------|--------|---------|---------|---------|-----------------|
| - | 0.07 | M6x1.00 | M6x1.00 | 20 | 36 | 20 | 13 | 6 | 36 | 5.1 |
| 11.449199608 | 0.14 | M8x1.25 | M8x1.25 | 20 | 36 | 20 | 13 | 6 | 36 | 5.5 |
| 11.449199610 | 0.23 | M10x1.5 | M10x1.5 | 25 | 45 | 25 | 17 | 8 | 45 | 10.3 |
| 11.449199612 | 0.34 | M12x1.75 | M12x1.75 | 30 | 54 | 30 | 20.5 | 10 | 53 | 16.9 |
| - | 0.49 | M14x2.00 | M14x2.00 | 35 | 63 | 35 | 27 | 12 | 60 | 29.9 |
| 11.449199616 | 0.7 | M16x2.00 | M16x2.00 | 35 | 63 | 35 | 27 | 12 | 62 | 30.7 |
| - | 0.9 | M18x2.50 | M18x2.50 | 40 | 72 | 40 | 30 | 14 | 71 | 42.8 |
| 11.449199620 | 1.2 | M20x2.5 | M20x2.5 | 40 | 72 | 40 | 30 | 14 | 71 | 42.4 |
| - | 1.5 | M22x2.5 | M22x2.5 | 45 | 81 | 45 | 35 | 14 | 80 | 62.8 |
| 11.449199624 | 1.8 | M24x3.00 | M24x3.00 | 50 | 90 | 50 | 36 | 18 | 90 | 90.8 |
| - | 2.5 | M27x3.00 | M27x3.00 | 50 | 90 | 50 | 36 | 18 | 90 | 88.3 |
| - | 3.2 | M30x3.50 | M30x3.50 | 65 | 108 | 60 | 45 | 22 | 109 | 159 |
| - | 4.3 | M33x3.50 | M33x3.50 | 65 | 108 | 60 | 45 | 22 | 110 | 167 |
| - | 4.6 | M36x4.00 | M36x4.00 | 75 | 126 | 70 | 54 | 26 | 128 | 235 |
| - | 6.1 | M39x4.00 | M39x4.00 | 75 | 126 | 70 | 54 | 26 | 130 | 266 |
| - | 6.3 | M42x4.50 | M42x4.50 | 85 | 144 | 80 | 63 | 30 | 147 | 403 |
| - | 8 | M45x4.50 | M45x4.50 | 85 | 144 | 80 | 63 | 35 | 150 | 521 |
| - | 8.6 | M48x5.00 | M48x5.00 | 100 | 166 | 90 | 68 | 35 | 168 | 632 |
| - | 11.5 | M56x5.50 | M56x5.50 | 110 | 184 | 100 | 78 | 38 | 187 | 879 |
| - | 16 | M64x6.00 | M64x6.00 | 120 | 206 | 110 | 90 | 42 | 208 | 1,240 |
| - | 21 | M72x6.00 | M72x6.00 | 150 | 260 | 140 | 100 | 50 | 260 | 2,293 |
| - | 28 | M80x6.00 | M80x6.00 | 170 | 296 | 160 | 112 | 55 | 298 | 3,200 |
| - | 40 | M100x6.00 | M100x6.00 | 190 | 330 | 180 | 130 | 60 | 330 | 4,800 |