

Dee Shackle with Screw Pin R-7821, Stainless Steel

Product information



Stainless steel dee shackle with screw pin.

Certification on request: 2.1, 2.2, 3.1

Standard: Generally to DIN 82102.

... [Read more](#)

Material: AISI 316

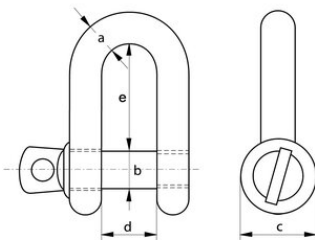
Marking: CE-marked

Finish: Polished

Note: WLL, manufacturer identification symbol (VBS), except for 4 mm as it is too small.

Dee Shackle with Screw Pin R-7821, Stainless Steel

Blueprint



Technical data

Part code	WLL	a mm	b mm mm	c mm	dmm mm	e mm mm	Weight
11.558194000	0.12	5	5	10	10	20	0.016
11.558192006	0.15	6	6	12	12	24	0.026
11.558192007	0.3	8	8	16	16	32	0.056
11.558192008	0.4	10	10	20	20	40	0.13
11.558194001	0.6	12	12	24	24	48	0.2
11.558193000	1	16	16	32	32	64	0.48
11.558193001	1.5	20	20	40	40	80	0.78
11.558193002	2	22	22	44	44	88	1.27
-	3	25	25	50	50	100	1.84
-	3.6	28	28	54	56	106	2.5