

## Bow Shackle BN Green Pin Polar® G-5163

### Product information



The Green Pin Polar® Bow Shackle BN is a bow shackle with a safety bolt that has been optimized for use in low temperatures. The shackle can be used in extreme climatic conditions, down to -60°C (-76°F). The shackle offers a double safety (split pin and safety bolt) which prevents accidental unscrewing of the pin. Long-term durability is assured due to the galvanization of the Green Pin Polar® Bow Shackle BN. Of course, the Green Pin Polar® Bow Shackle BN conforms to a wide range of certifications from class societies such as DNV GL. The Green Pin Polar® Bow Shackle BN is suitable for both one-leg and multi-leg systems and is available in a range with a working load limit from 2 up to 85 ton.

Certification on request: 2.1, 2.2, 3.1, MTCa, DNV 2.7-1a, DNV 2.7-1b, DNVGL-ST-0378, ABS PDA, ABS MA

**Safety factor:** 7:1 up to WLL 42,5 ton. 6:1 for 55 and 85 ton.

... [Read more](#)

**Material:** Bow and pin alloy steel

**Marking:** According to standard

**Temperature range:** -60°C up to +200°C

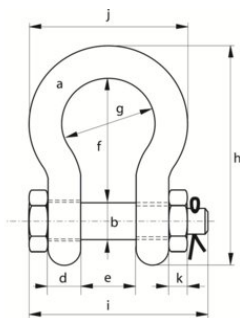
**Finish:** Hot dip galvanized

**Standard:** EN 13889

**Grade:** 8

## Bow Shackle BN Green Pin Polar® G-5163

### Blueprint



### Technical data

Part code	WLL ton	a mm	b mm	c mm	d mm	e mm	f mm	g mm	h mm	i mm	j mm	k mm	Weight kg
11.31POGHMB13	2	13,5	16	34	13	22	51	32	89	82	58	13	0.42
11.31POGHMB16	3.25	16	19	40	16	27	64	43	110	98	75	17	0.74
11.31POGHMB19	4.75	19	22	46	19	31	76	51	129	114	89	19	1.18
11.31POGHMB22	6.5	22	25	52	22	36	83	58	144	130	102	22	1.77
11.31POGHMB25	8.5	25	28	59	25	43	95	68	164	150	118	25	2.58
11.31POGHMB28	9.5	28	32	66	28	47	108	75	185	166	131	27	3.66
11.31POGHMB32	12	32	35	72	32	51	115	83	201	178	147	30	4.91
11.31POGHMB35	13.5	35	38	80	35	57	133	92	227	197	162	33	6.54
11.31POGHMB38	17	38	42	88	38	60	146	99	249	202	175	19	8.19
11.31POGHMB45	25	45	50	103	45	74	178	126	300	249	216	23	14.22
11.31POGHMB50	35	50	57	116	50	83	197	138	334	269	238	26	19.85
11.31POGHMB57	42.5	57	65	130	57	95	222	160	377	301	274	29	28.33
11.31POGHMB65	55	65	70	145	65	105	260	180	433	330	310	32	39.59
11.31POGHMB75	85	75	83	162	73	127	329	190	527	380	340	39	62